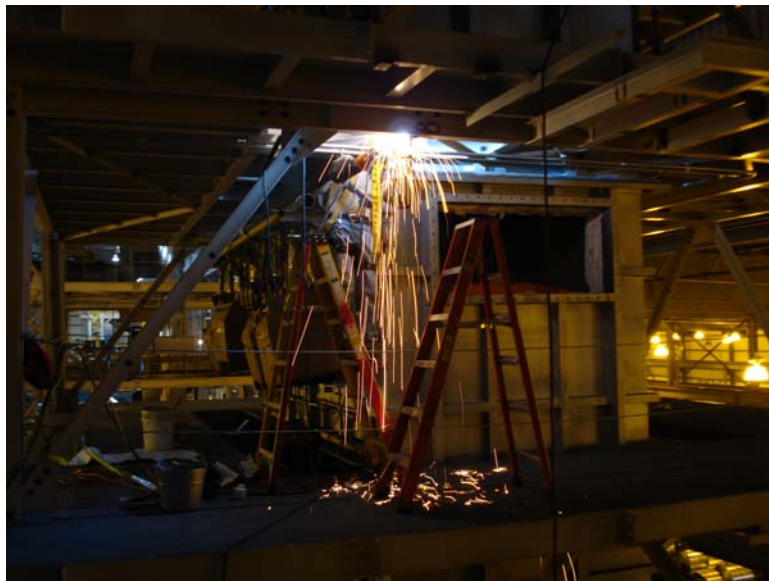


# Worthington Steel

Design . Build • Delta, Ohio

## *Furnace Installation*

With the domestic demand for galvanized steel on the rise, Worthington Steel — America's largest independent processor of flat-rolled steel, and a major supplier to the automotive industry — needed to add capacity at its 11-year-old steel-processing plant in Delta, Ohio. Worthington selected IPS to install a new vertical radiant tube furnace at the plant in order to increase the facility's ability to generate the heat needed to speed up its processing capabilities.



## *Project Scope*

IPS installed all of the piping, electrical wiring, and rigging for the vertical radiant tube furnace, as well as the support structural steel and concrete foundations. The new vertical furnace, which runs up to a height of 90 feet, was built into a section of the plant's furnace system that had previously housed a 30-foot horizontal tube furnace. To keep Worthington Steel's shut down time to a minimum, IPS performed the majority of the work while the plant was in operation.

By upgrading to this new furnace, the plant is able to generate significantly more heat in the same amount of floor space. With the additional heating furnace capacity, Worthington Steel's Delta plant has increased the throughput rates of its hot-dipped steel galvanizing and slitting lines. Now, when end users call for more of its products, Worthington is able to meet the increased demand in a timely manner, improving its ability to serve its customer base.

*Project Duration:* 3 Months  
*Project Cost:* \$1.1 Million

For more information about IPS, visit us at  
[www.IPScontractor.com](http://www.IPScontractor.com)

INDUSTRIAL METALS



**IPS**