

Energy Developments

Lowellville, Ohio

Carbon Limestone Landfill

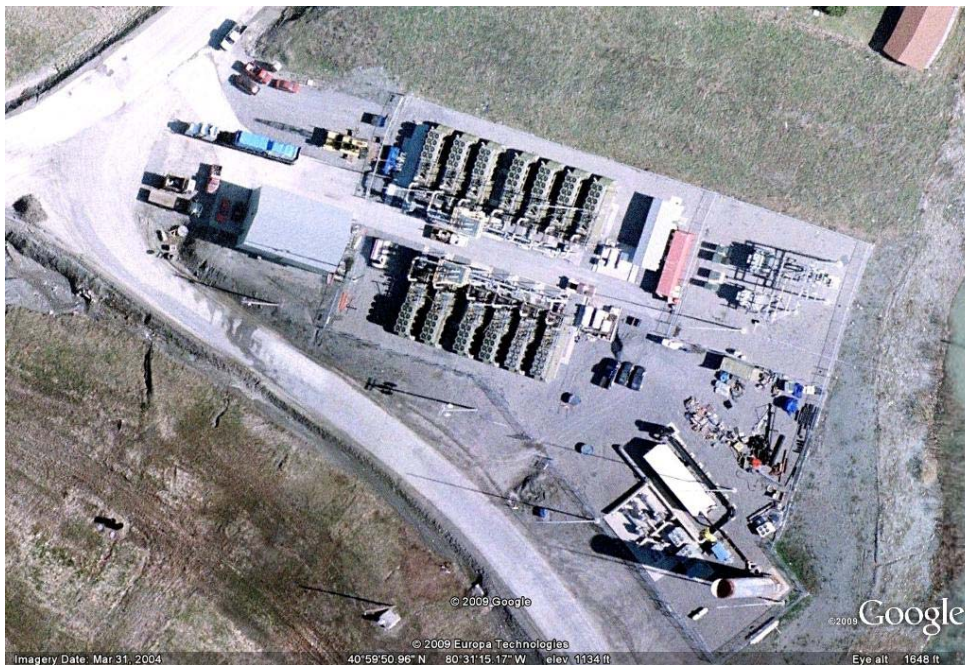
The landfill accepts nonhazardous industrial solid wastes and sludges, construction and demolition debris, and household refuse. Wastes accepted by the facility, requiring approvals prior to disposal, include: processed medical waste, oily and special wastes. If any waste material cannot pass the paint filter test, it is solidified using cement kiln dust prior to being placed in the landfill.

Project Scope

IPS has been contracted by EDI to perform procurement and installation services for the landfill gas treatment project at EDI's Carbon Limestone power station. This power station currently generates 19.1 MW of electricity while receiving 9,600 SCFM of landfill gas. Four Parker GES 1500 LFG siloxane removal units will be installed in the existing LFG pipeline feeding the engines. IPS was awarded a GMP contract for the equipment purchase and build out scope of this project. Vendor selection and purchase of the blowers, coolers, heat exchangers, thermal oxidizer, transformers, and other key components are included in our scope of services. IPS is responsible for the complete build out scope to include site work, concrete foundations, equipment setting, structural steel, carpentry, mechanical, piping, electrical, and control work. Construction is expected to be completed in December 2010.

Project Duration: 8 months

Project Cost: \$4,500,000



ALTERNATIVE FUELS



IPS